

Annual Report 2021 NYC DESIGN

Contents

About the Public Design Commission	2
Commissioners	3
Staff	3
Conservation Advisory Group	3
Design Review	4
2021 Year in Review	7
Submissions by Type	8
Architecture and Structures	9
Parks, Open Spaces, and Streetscapes	10
Artworks	11
Private Structures on or over City-owned Land	12
Carry-over Projects	12
Submissions Acted or Commented Upon	13
Review Cycles	13
Submissions and Projects by Lead Agency	14
Submissions and Projects by Borough	15
Completed Projects	16
Annual Awards for Excellence in Design	20
Special Projects and Interagency Initiatives	27
Streetscapes for Wellness	28
Prefabrication in the Public Realm	32
Quality Affordable Housing	33
Other Collaborations and Initiatives	34
The Archive	35
City Hall Tours	36
Commissioner Biographies	40
Staff Biographies	43

The Public Design Commission

About the PDC

As New York City's design review agency, the Public Design Commission (PDC) has jurisdiction over permanent structures, landscape architecture, and art proposed on or over City-owned property. The mission of the PDC is to advocate for innovative, sustainable, and equitable design of public spaces and civic structures, with a goal of improving the public realm and therefore related services for all New Yorkers throughout the five boroughs.

The Commission is made up of 11 members who serve pro bono and meet once per month to review and vote on projects submitted by City agencies. Members include an architect, landscape architect, painter, sculptor, and three lay members, as well as representatives of the Brooklyn Museum,

Metropolitan Museum of Art, New York Public Library, and the Mayor. The PDC staff assists the Commission members in their duties and guides submitting agencies through the design review process.

The PDC also acts as caretaker and curator of the City's public art collection, which is located throughout the City's buildings and open spaces, and maintains an extensive archive documenting the history of New York City's public works.

The Commission's purview and rules are outlined in Chapter 37 of the New York City Charter and the Commission's Rules of Practice and Procedure.



Eleanor Roosevelt by Penelope Jencks was spotted wearing a mask in Riverside Park, Manhattan; photo courtesy of Jonathan Kuhn

2021 and Beyond

In 2021, as the COVID-19 pandemic continued into a second year, the number of proposals submitted for monthly design review began to increase toward pre-pandemic levels, and the Public Design Commission rose to the challenge. PDC staff honed their remote public meeting skills, delved into public design related research, and came up with new fun ways to celebrate City projects in the virtual realm.

As staff made the gradual transition back to the office beginning in May, they continued to foster collaborations with other city agencies in developing design guidelines and ideas for capital projects and facilitated the review of high-priority developments and initiatives that will bring improvements, resiliency, and equity to public spaces.

In the year ahead, the PDC will combine a forward-thinking approach aimed at placing New York City at the forefront of resilient and sustainable design with a practical approach that streamlines the design review process. The Public Design Commission is committed to ensuring our public spaces in all five boroughs are designed to help New Yorkers feel welcome, safe, and served in their communities. A well-designed and cared for public realm is integral to New York City's recovery.

Commissioners

Signe Nielsen, President, Landscape Architect

Philip E. Aarons, Vice President, Lay Member

Kenseth Armstead, Painter

Laurie Hawkinson, Architect

Karen Kiehl, Brooklyn Museum (appointed May 2021)

Deborah Marton, Lay Member

Manuel Miranda, Lay Member

Richard Moore, Brooklyn Museum* (resigned April 2021)

Susan Morgenthau, The New York Public Library

Ethel Sheffer, Mayor's Representative

Dr. Merryl H. Tisch, The Metropolitan Museum of Art

Mary Valverde, Sculptor

* *Former Commissioner*

Staff

Keri Butler, Executive Director

Grace Han, Senior Director of Capital Projects

Rebecca Macklis, Deputy Director of Architecture, Urban Design & Special Initiatives

Jenna E. Miller, Urban Design & Policy Manager

Carolina Llano, Manager of Art, Conservation & Design

Julianna Monjeau, Archivist & Senior Records Manager

Mary Beth Betts, City Hall Tour Manager

Gail Cornell, **Gary Deane**, **Gail Green**, **Deirdre LaPorte**, and **Patricia Orfanos**, Docents

Conservation Advisory Group

The Conservation Advisory Group (CAG) includes professionals in the fields of art, conservation, preservation, and history who volunteer their time providing guidance to the PDC on art conservation and preservation projects.

Lucy Belloli, former Senior Conservator, The Metropolitan Museum of Art

Dr. Michele H. Bogart, Professor, Department of Art, SUNY Stony Brook

Lauren Bradley, Associate Conservator of Paintings, Brooklyn Museum

Lisa Bruno, Carol Lee Shen Chief Conservator, Brooklyn Museum

Phyllis Samitz Cohen, Director of Adopt-a-Monument/Mural Programs, The Municipal Art Society

Isabelle Duvernois, Associate Conservator, The Metropolitan Museum of Art

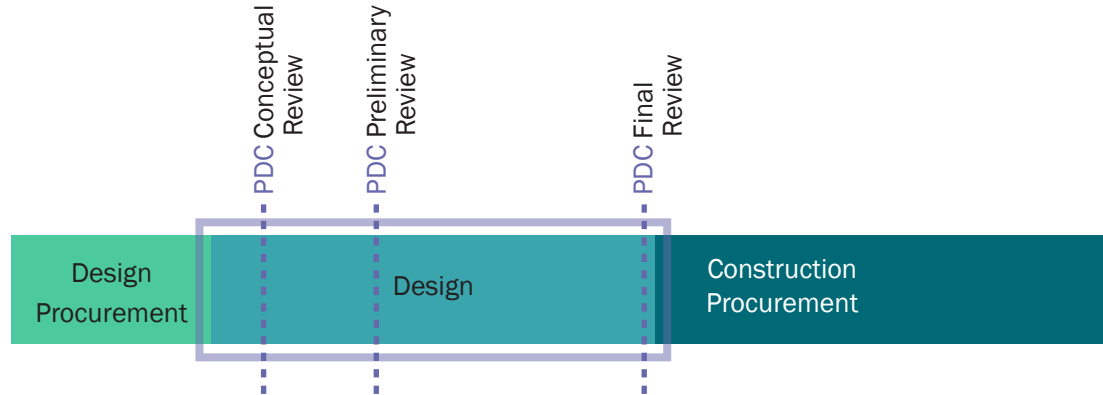
Stephen E. Gottlieb, AIA and formerly of WASA

Kendra Roth, Associate Objects Conservator, The Metropolitan Museum of Art

John Willenbecher, Artist and former Art (PDC) Commission member

Design Review

A Typical Capital Project Schedule



When determining whether to approve or reject proposals, the Commission considers a diverse range of design parameters, including the unique context of the site and surrounding area, the history of the site and project, the durability and resiliency of the materials, the sustainability and maintainability of the design, the appropriateness of the design in terms of how it will facilitate the desired function and program, and how to best serve the public through long-term planning and innovative solutions.

The PDC has developed guidelines for certain types of projects, which are intended to provide a general sense of designs the Commission supports, clarify requirements, provide guidance to applicants, and streamline the review process. In addition, staff has worked with City agencies to develop expedited review strategies for prototypical and standardized designs and projects with small scopes.

Due to the iterative nature of design development, the PDC has established multiple levels of review – Conceptual, Preliminary, and Final – that are integrated into typical project schedules established by City capital agencies. The charts on these two pages indicates where the different levels of PDC review fit within a typical capital project schedule. Individual projects may be submitted multiple times within a year as the design progresses through the levels of review.

Conceptual

Conceptual review is required for all artworks, ground-up buildings, major infrastructure projects, master plans, other large-scale or complex projects, as well as projects that are subject to the Uniform Land Use Review Procedure (ULURP). Submissions are made early in the design process when drawings are at the pre-schematic level.

Preliminary

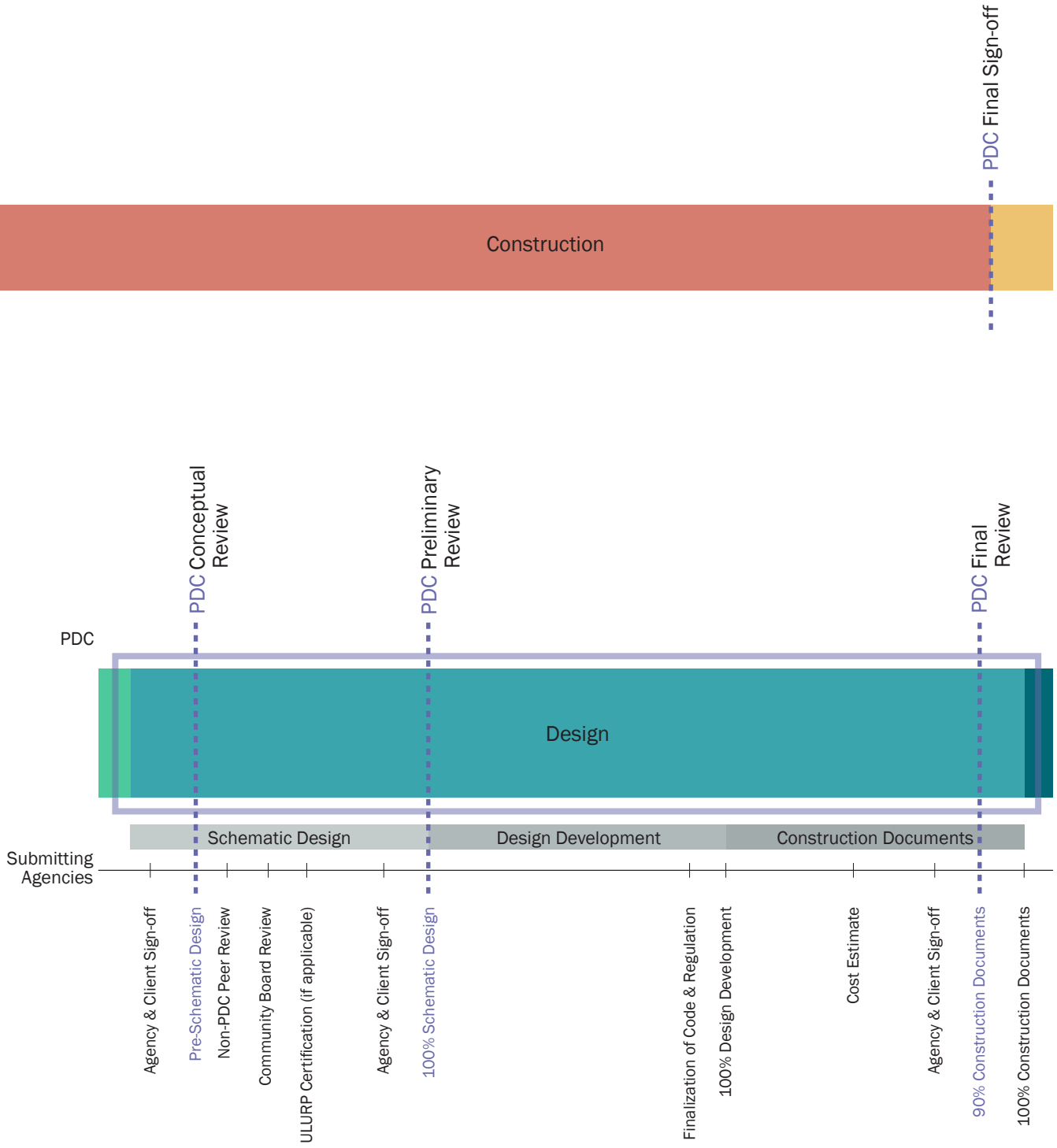
For structures and landscapes, preliminary review occurs at the end of the schematic design phase. For artworks, preliminary review occurs when the artist has completed fabrication drawings.

Final

For structures and landscapes, final review and approval occurs at approximately 90% completion of construction documents. Once final approval is granted, construction can commence. For artworks, final review takes place after the artwork has been installed and includes the submission of photographs documenting the installed artwork.

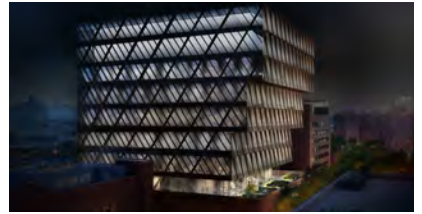
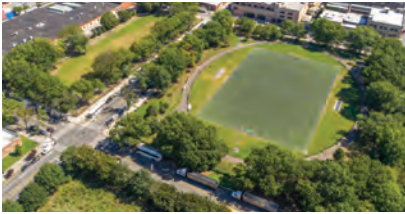
Final Sign-off

Final sign-off occurs after a project has been completed and photographic documentation has been submitted.





Year in Review 2021



Total Number of Submissions by Type

The Public Design Commission typically reviews approximately 800 to 1,000 submissions (600 to 800 unique projects) every year. However, due to an emergency declaration to stop all nonessential construction during the COVID-19 pandemic, the PDC experienced a significant decrease in the number of annual submissions received during 2020. The number of unique projects reviewed in 2021 rebounded by 23%, but has not yet returned to pre-pandemic levels. Most of the projects that the PDC reviews fall under the major categories of structures, parks, open spaces, and streetscapes, and artwork. These main categories are further broken down and described in the following pages.

Total Number of Submissions Received: **813**



Total Number of Unique Projects Reviewed: **611**

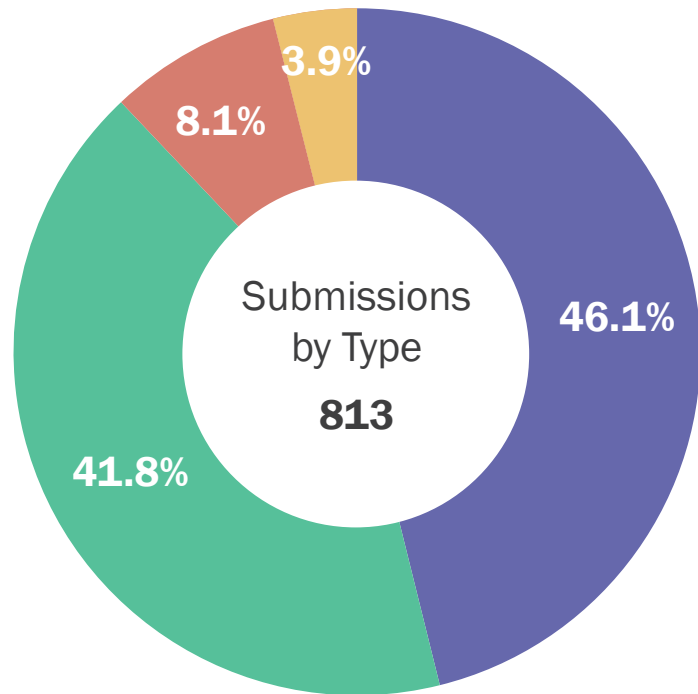


A **submission** is a package of review materials for a single project at a specific level of review.

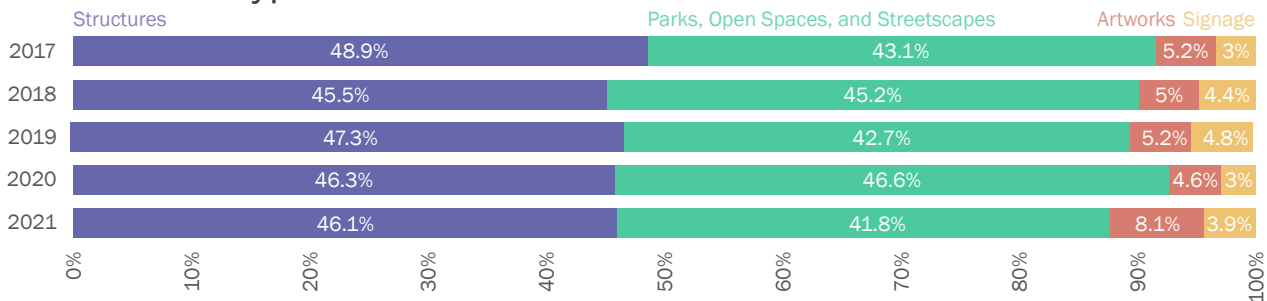
A **project** is a unique scope of work at a site. One project may have multiple submissions within one year, such as for different levels of review.

Structures	46.1% [375]
Parks, Open Spaces, and Streetscapes	41.8% [340]
Artworks	8.1% [66]
Signage	3.9% [32]

NOTE: All numbers have been rounded to the nearest tenth of a percent.



Submission Type Ratio Per Year



Architecture and Structures

Architectural projects range in size and scope from large-scale multi-building developments to small-scale building improvements such as HVAC installations. Projects may include new affordable housing, libraries, police stations, sanitation garages, and bridges as well as renovations or restorations of existing buildings or bridges and the installation of mechanical units or other equipment.

Building Modifications and Minor Structures

Installation of prefabricated structures or small-scale additions of specific elements such as photovoltaic panels, HVAC units, or lighting

Construction

An entirely new building, bridge, or other structure

Reconstruction

Replacement of an existing structure with a new one of the same function

Rehabilitation

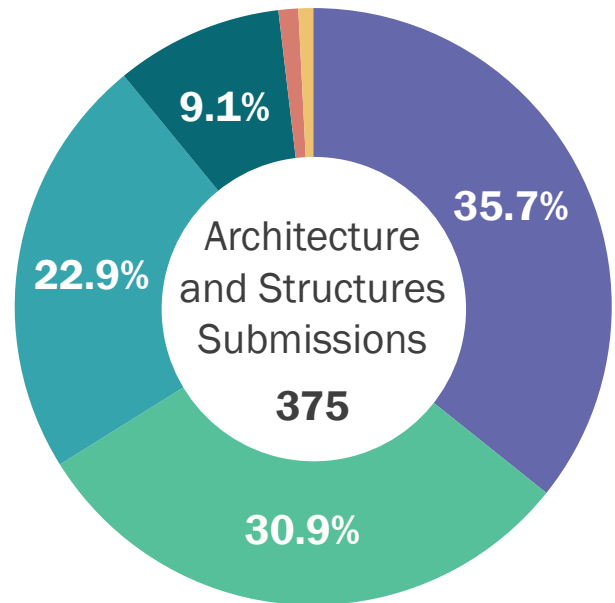
An upgrade for the purpose of making a building functional today, such as improvements to life safety and HVAC systems

Renovation

Significant changes to an existing structure

Prototype

A typical design that can be replicated at multiple locations, requiring only minor site specific adjustments



Building Modifications, Minor Structures, Installs	35.7% [134]
Constructions	30.9% [116]
Reconstructions	22.9% [86]
Rehabilitations	9.1% [34]
Renovations	1.1% [4]
Prototypes	0.3% [1]

NOTE: All numbers have been rounded to the nearest tenth of a percent.

1. Rego Park Library, Queens (below)
Queens Public Library, Department of Design & Construction
Weiss/Manfredi

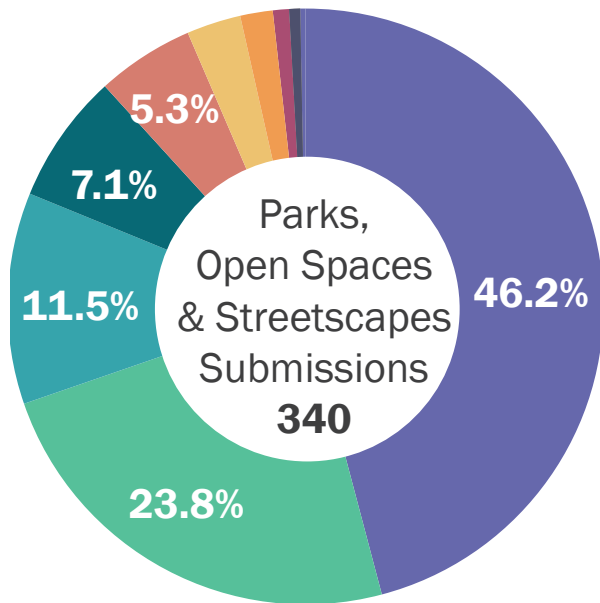


Libraries are Back!

In 2021, the PDC approved 4 new libraries, 5 artwork installations within libraries, 5 completed library projects, 2 renovations, 2 building upgrades, and a courtyard rehabilitation.

Parks, Open Spaces, and Streetscapes

Landscape projects range in scale from master plans for large-scale open spaces and streetscapes to the installation of specific site furnishings, such as benches or newsstands. The most common type of landscape architecture submission is the reconstruction of parks, including playgrounds and athletic fields. Projects may also include parking lots, dog runs, path reconstructions, streetscapes, planter installations, esplanades, flood mitigation measures, and shoreline stabilizations.



Reconstructions	46.2%	[157]
Constructions	23.8%	[81]
Minor installations	11.5%	[39]
Street Furniture	7.1%	[24]
Distinctive Sidewalks	5.3%	[18]
Rehabilitations	2.9%	[10]
Master Plans	1.8%	[6]
Newsstands	0.9%	[3]
Distinctive Lighting	0.6%	[2]

NOTE: All numbers have been rounded to the nearest tenth of a percent.

Reconstruction

Replacement of an existing park, plaza, or streetscape with a new one

Construction

An entirely new park, plaza, or streetscape

Minor Installation

The addition of specific elements, such as artificial turf, tennis bubbles, or adult fitness equipment

Street Furniture

Amenities installed on a sidewalk

Distinctive Sidewalk

Non-standard sidewalk treatments, materials, scoring patterns, or tints

Rehabilitation

An upgrade for the purpose of making an open space functional today, such as improvements to pathways, and site furnishings

Master plan

A framework for a large site that often includes landscape as well as structures

Newsstand

Prototypical street furniture approved for sidewalk vending

Distinctive Lighting

Light fixtures distinct from the typical poles for a neighborhood

Artworks

Artwork projects include the installation of new artworks as well as the conservation, relocation, and removal of existing artworks. Artworks may be installed within buildings, on the facades of buildings or structures, or outside in public plazas or parks. Artworks may include but are not limited to sculptures, bas reliefs, engravings, paintings, mosaics, photographs, and electronic media.

The City typically commissions artworks for City-owned property through the Department of Cultural Affairs' Percent for Art Program. The sponsoring City agency and the Percent for Art Program are jointly responsible for the selection of the artist and the development of the work of art. A member of the Public Design Commission serves as an advisor on the Percent for Art artist selection panel. Once the proposal is approved by both the sponsoring agency and the Percent for Art Program, it is submitted to the Commission for review.

For projects that are not going through Percent for Art, the PDC requests that applicants follow the Percent for Art process, where a panel including art professionals selects the artist.

Installation

Commissioning of a new artwork for a site, usually through the Percent for Art program

Removal

The removal of an artwork from its existing location to storage or the deaccessioning of an artwork

Conservation

The treatment by a conservator to preserve an artwork, including but not limited to cleaning, recreation of missing elements, crack repairs, stabilization, repainting and repatination

Restoration

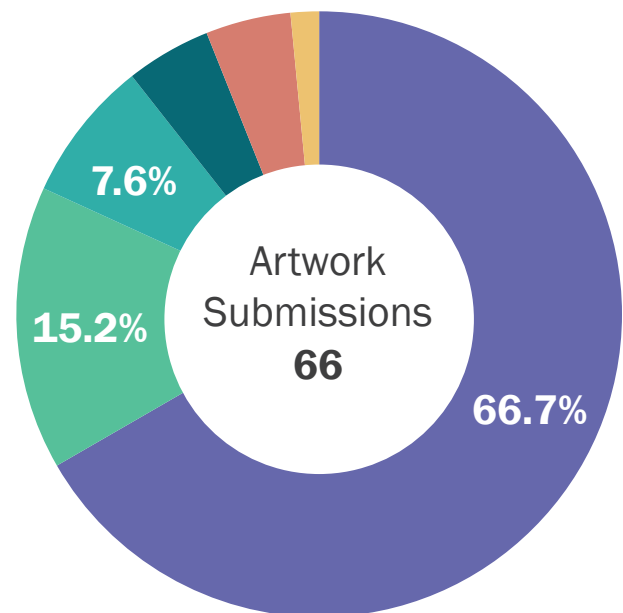
Treatment procedures intended to return an artwork to its known or assumed original state

Loan

The temporary transfer of an artwork from the City to another institution, typically for display

Relocation

The moving of an artwork from one site to another site



■ Installations	66.7% [44]
■ Removals*	15.2% [10]
■ Conservations	7.6% [5]
■ Restorations	4.5% [3]
■ Loans*	4.5% [3]
■ Relocations	1.5% [1]

NOTE: All numbers have been rounded to the nearest tenth of a percent.

* Removals and Loans included artworks from the Manhattan Detention Complex, which is being demolished; the loan of the *Theodore Roosevelt Monument* (1940) by James Earle Fraser from the American Museum of Natural History to the Theodore Roosevelt Presidential Library in North Dakota; and the loan of *Thomas Jefferson* (1833) by Pierre-Jean David (David D'Angers) from the City Council Chamber in City Hall to the New-York Historical Society.

Private Structures on or over City-owned Land

The PDC reviews privately-owned and/or operated structures and installations sited on or over City-owned land. Examples may include a concessionaire such as a restaurant or a recreation facility within a park, a mixed-use development on leased City-owned land, a newsstand, a distinctive sidewalk, or a stoop that extends onto the public right-of-way.



Public	79.6% [647]
Public and Private	14.6% [119]
Private	5.8% [47]

In 2021, the PDC reviewed 47 submissions for private structures or installations on or over City-owned property.



1. Construction of the Bronx Animal Care Center
Department of Design and Construction
Department of Health and Mental Hygiene
Animal Care Centers of NYC
Marvel
2. Construction of a café addition, McCarren Park House, Brooklyn
Department of Parks & Recreation
KTISMA Studio

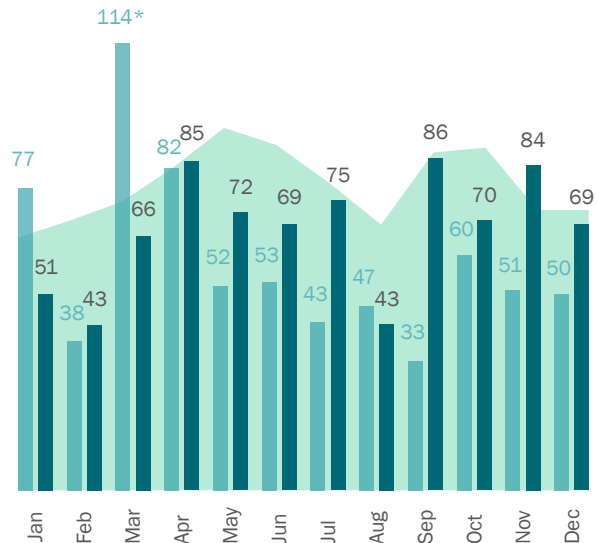
Carry-over Projects

The PDC works year-round and typically the submission deadline for the January meeting is in December, so this one-month review cycle extends into the following year. In late March 2020, the COVID-19 pandemic led to a New York State mandate that paused nonessential work. This resulted in a significant reduction in submissions for the remainder of the year. In 2021, the number of submissions per month increased to be more similar to pre-pandemic levels.

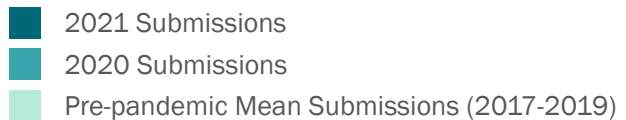
In 2020, 50 submissions were submitted in December for the January 2021 meeting. All of these submissions were either commented upon or approved in January 2021.

In 2021, 69 submissions were submitted in December and were then reviewed in January 2022.

* The number of submissions reviewed in March 2020 were higher than usual because 33 submissions were deferred from the February 2020 meeting due to a lack of quorum.



2021 Submissions by Month versus 2020 and Pre-Pandemic Mean



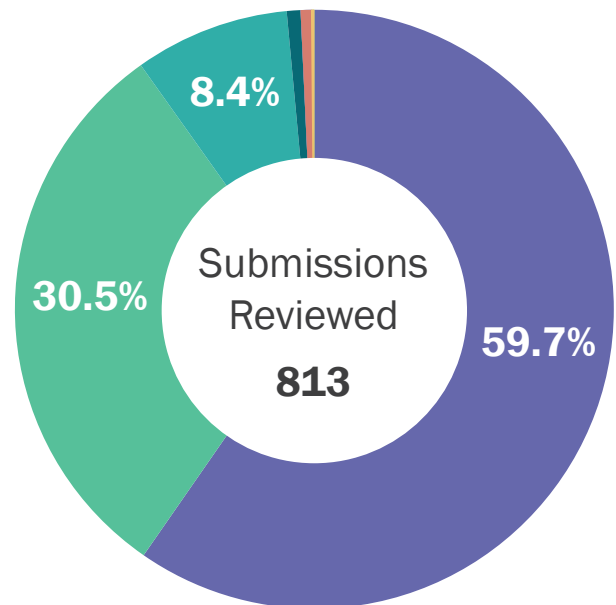
Number of Submissions Acted or Commented Upon

Design review is an iterative process and the PDC works to provide applicants with feedback and guidance so that their submissions can be approved in the shortest number of review cycles. Even if a submission is not formally acted upon by the Commission within a cycle, the PDC typically provides feedback that will help the agencies revise their proposal so that it may be approved the following month. Submissions that were commented upon but not acted upon may have been submitted for Conceptual level review or informal review and include final sign-off and amendments to approved designs.

The term *“acted upon”* means an action was made by the Commission on a submission in the form of an approval, approval with conditions, or a rejection.

The term *“commented upon”* means written comments were provided to the sponsoring agency by the Commission, or a special committee within the Commission.

■ Commented upon	59.7% [485]
■ Approved	30.5% [248]
■ Approved with conditions	8.4% [68]
■ Found incomplete/Tabled	0.7% [6]
■ Withdrawn by Agency	0.6% [5]
■ Rejected	0.1% [1]

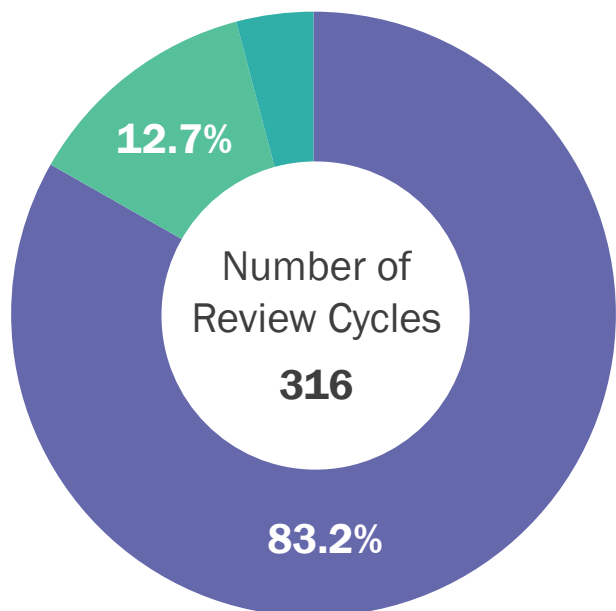


Review Cycles

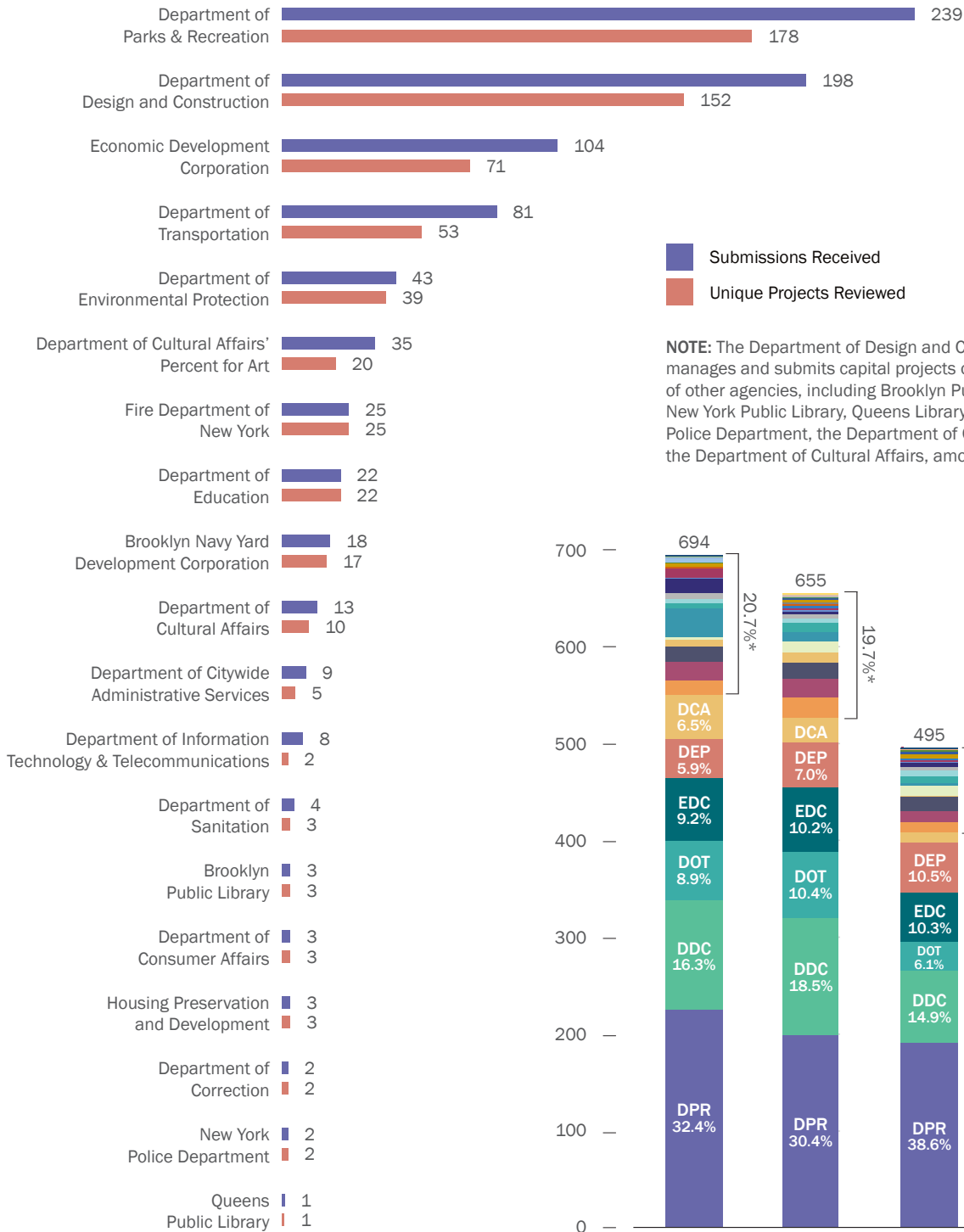
The PDC reviewed 95.9% of the 316 acted upon projects in two or fewer cycles.

The term *“review cycle”* means the time between the deadline for the filing of a submission to the Commission and the scheduled date of the next public meeting of the Commission.

■ One Cycle	83.2% [263]
■ Two Cycles	12.7% [40]
■ Three or More Cycles	4.1% [13]

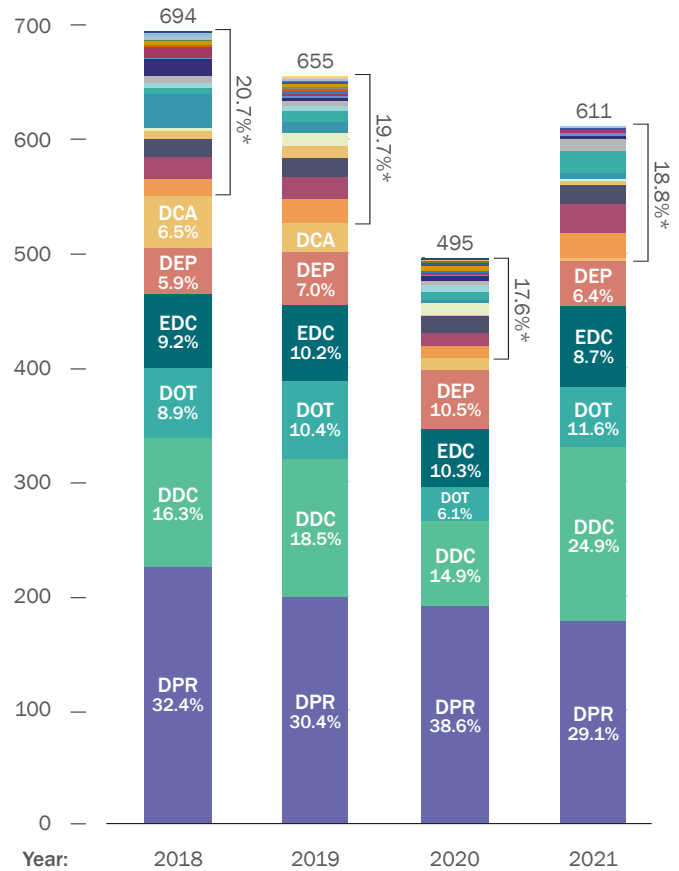


2021 Submissions and Projects by Lead Agency



■ Submissions Received
■ Unique Projects Reviewed

NOTE: The Department of Design and Construction manages and submits capital projects on behalf of other agencies, including Brooklyn Public Library, New York Public Library, Queens Library, New York Police Department, the Department of Correction, and the Department of Cultural Affairs, among others.

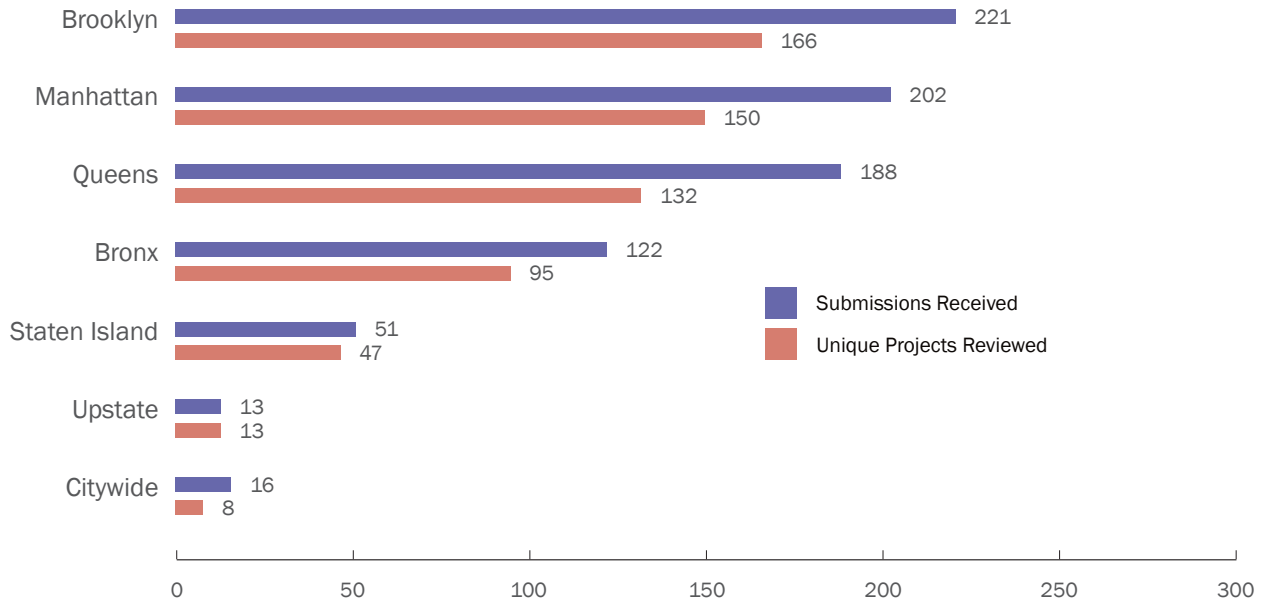


Unique Projects per Year by Lead Agency

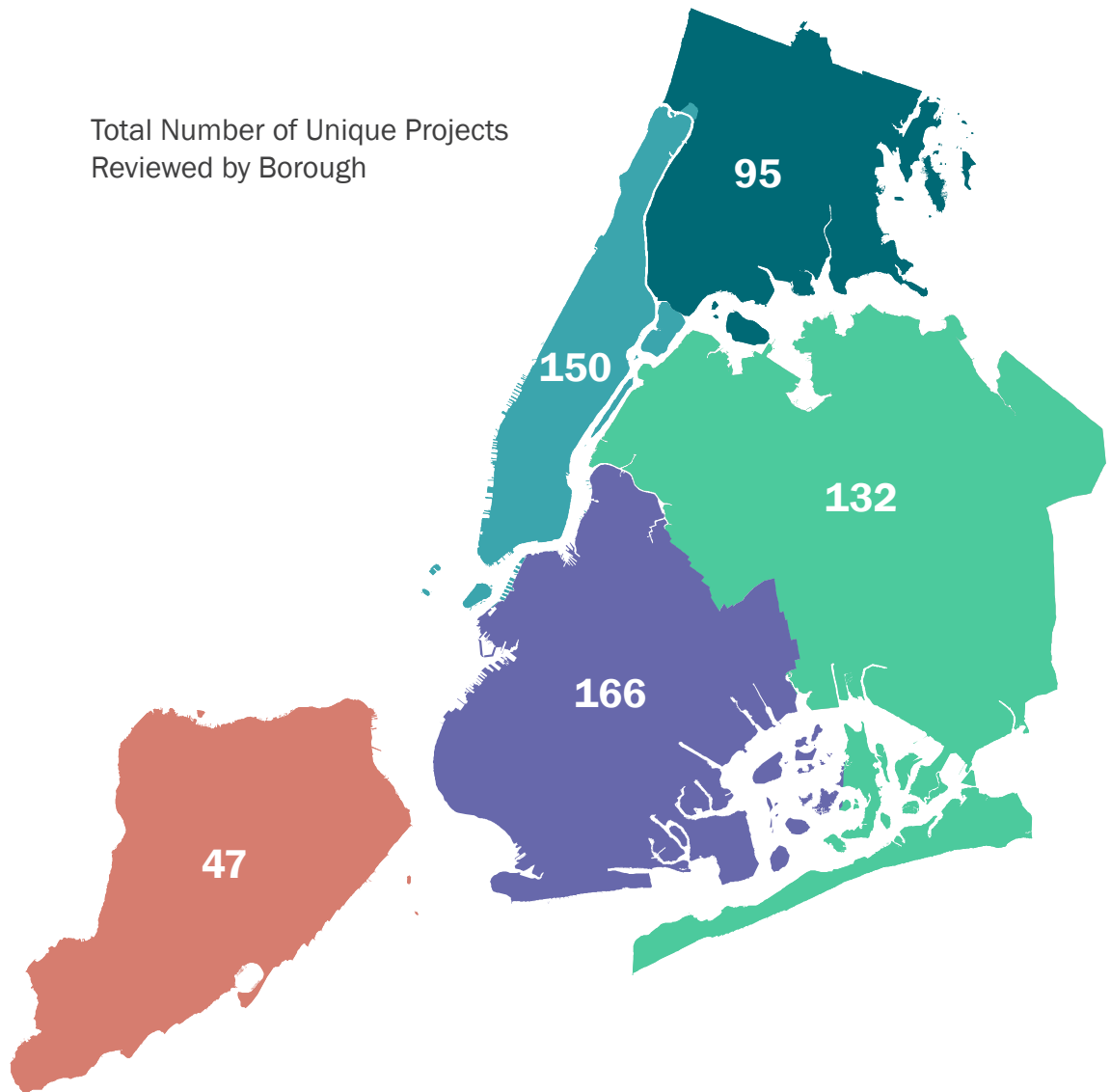
* These figures represent the percentage of projects reviewed by the PDC that were led by the remaining 21 submitting agencies



2021 Submissions and Projects by Borough



Total Number of Unique Projects Reviewed by Borough



2021 Completed Projects

As part of the PDC's design review process, photographs of completed projects are submitted for final review and sign-off. Here are some highlights from 2021.

1 Atlantic Avenue prototypical planted median

Brooklyn

Department of Design and Construction
Department of Transportation
B. Thayer Associates
Henningson, Durham and Richardson Architecture
and Engineering



2 Greenpoint Branch Library and Environmental Education Center

Brooklyn

Brooklyn Public Library
Marble Fairbanks
Scape Landscape Architecture



3 Baruch Plaza

Manhattan

Department of Design and Construction
Department of Transportation
MNLA



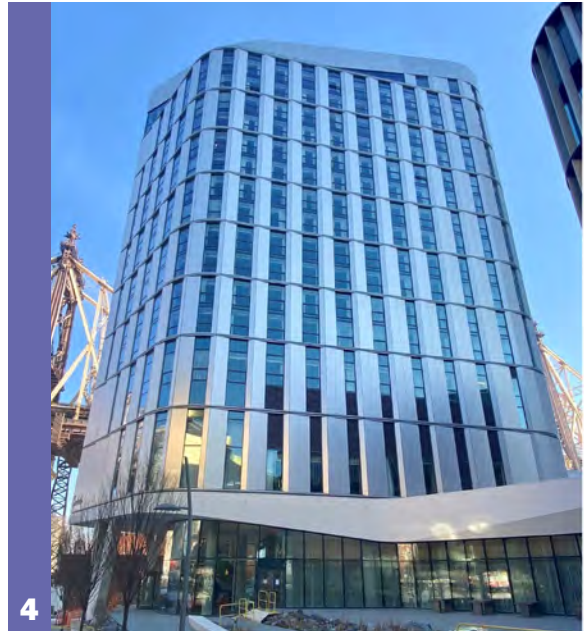
**4 Executive Education Center and Hotel,
Cornell Tech**

Roosevelt Island, Manhattan

Economic Development Corporation

Snøhetta

Field Operations



5 Wolfe's Pond Park

Staten Island

Department of Parks & Recreation



**6 Waterfront Nature Walk by George Trakas,
Newtown Creek Water Pollution Control Plant**
Brooklyn

Department of Environmental Protection

Department of Cultural Affairs' Percent for Art

Department of Design and Construction

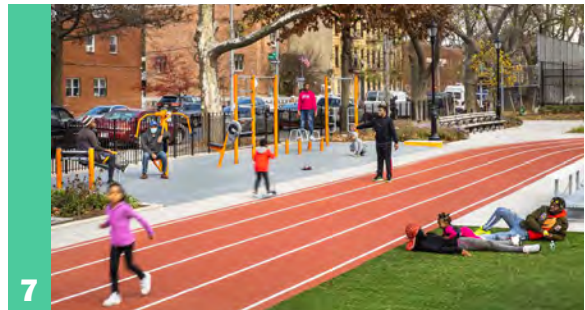
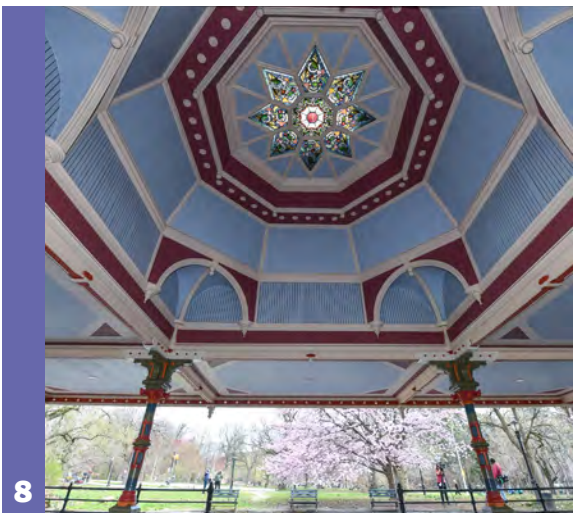


7 Betsy Head Park

Brooklyn

Department of Parks & Recreation

Abel Bainnson Butz Associates



8 Prospect Park Tea House Pavilion Restoration

Brooklyn

Department of Parks & Recreation

Prospect Park Alliance





9 Idlewild Park Nature Center

Queens

Department of Parks & Recreation

Handel Architects

MNLA



10 Town of North Castle Wetlands

Westchester County

Department of Environmental Protection

HDR

11 West Thames Pedestrian Bridge over Route 9A
Manhattan

Economic Development Corporation

Department of Transportation

WXY Architecture and Urban Design

Weidlinger Associates and Consulting Engineers

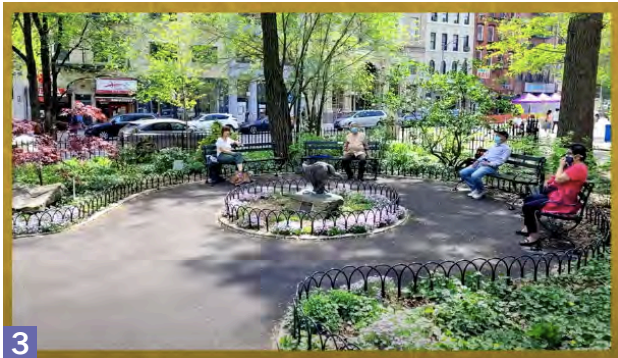
Arup



39th Annual Awards for Excellence in Design

On June 10, 2021, PDC President Signe Nielsen and Executive Director Keri Butler announced the winners of the Annual Awards for Excellence in Design. As the COVID-19 pandemic continued into another year, the importance of our outdoor public spaces for the health and well-being of New Yorkers was further underscored. With this renewed appreciation, the 39th Annual Design Awards event included a special focus on our city parks as essential spaces for gathering, recreation, civic action, and respite throughout the pandemic. A special recognition award was given to the Parks maintenance, operations, and conservation staff, including the many partner organizations who raise funds and organize volunteers, as well as the thousands of front-line workers who were out there every day cleaning up after yesterday's picnics.

As part of the Design Awards, the PDC organized a fun trivia event that highlighted initiatives undertaken over the past eight years to provide equitable and welcoming public open spaces for all New Yorkers. PDC Executive Director Keri Butler and PDC Commissioner Kenseth Armstead quizzed special guests on New York City's public realm. Participants included the Director of the Mayor's Office of Climate Resiliency, Jainey Bavishi, DEP Commissioner Vincent Sapienza, and DPR Commissioner Mitchell J. Silver.





5

During the 2021 online event, we took a moment to showcase photographs of PDC staff and our agency colleagues in their favorite parks!



6

1. Richmond Terrace wetlands reconstruction, Van Pelt Street and Van Name Street, Staten Island
2. Reconstruction of the Reflecting Pool, Flushing Meadows Corona Park, Corona, Queens
3. Reconstruction of Seward Park, including the library plaza and garden, East Broadway, Canal Street, and Essex Street, Manhattan
4. PDC Executive Director Keri Butler and PDC Commissioner Kenseth Armstead quizzing DPR Commissioner Mitchell J. Silver on local NYC parks
- 5 - 8. The 2021 event showcased photographs of staff and agency colleagues in their favorite parks!



7



8

Award Winning Projects

1 Reconstruction of Grant Park

Grant Avenue between East 169th Street and East 170th Street, Bronx

A project of the Department of Parks & Recreation and the Department of Transportation
Stantec



2 Brownsville Library Renovation and Expansion

61 Glenmore Avenue, Brooklyn

A project of the Department of Design and Construction and Brooklyn Public Library
LTL Architects
Architectural Preservation Studio
Local Office Landscape + Urban Design



3 Construction of Bushwick Inlet Park, Motiva Parcel

Kent Avenue between North 14th Street and North 15th Street, Brooklyn

A project of the Department of Parks & Recreation
Abel Bainnson Butz



4 Modular comfort station prototype for parks citywide

A project of the Department of Parks and Recreation
1100 Architect



5 Paradise Parados by Teresita Fernández

Robert W. Wilson Sculpture Terrace at BAM Strong, 651 Fulton Street, Brooklyn

A project of the Department of Cultural Affairs and the Brooklyn Academy of Music
Teresita Fernández
Camber Studios



6 Reconstruction of Ericsson Playground

Adjacent to M.S. 126, Manhattan Avenue and Leonard Street, Brooklyn

A project of the Department of Parks & Recreation
Field Operations



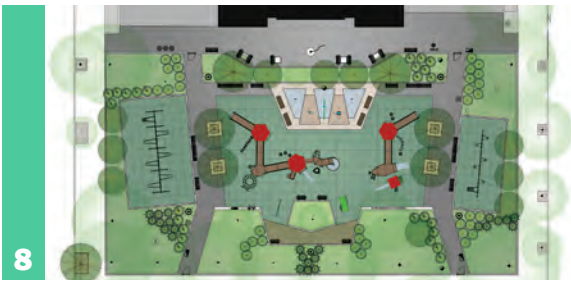


7

7 Reconstruction of the Pool and Rink at the Harlem Meer

Central Park between East Drive and the Harlem Meer, Manhattan

A project of the Department of Parks and Recreation and the Central Park Conservancy
Susan T. Rodriguez Architecture & Design
Mitchell-Giurgola

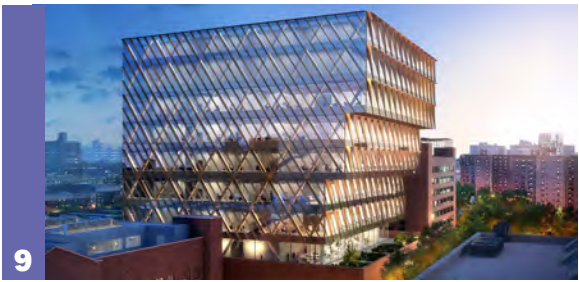


8

8 Reconstruction of Gorman Playground

84th Street, 25th Avenue, 85th Street, and 30th Avenue, East Elmhurst, Queens

A project of the Department of Parks and Recreation
DPR In-house



9

9 Public Health Laboratory at the Harlem Hospital Center

40 West 137th Street, Manhattan

A project of the Economic Development Corporation and the Department of Health and Mental Hygiene
SOM



10

10 Reconstruction of Dongan Playground

Adjacent to P.S. 52, Dongan Hills Avenue, Mason Avenue, and Buel Avenue, Staten Island

A project of the Department of Parks and Recreation
DPR In-house



11

11 Waterfowl Management Program Building

Kensico Reservoir, Valhalla

A project of the Department of Environmental Protection
Hazen Goshaw Architects



12

12 Reconstruction of soccer fields at the Red Hook Recreation Area, Phase IV

Clinton Street, Bay Street, and Court Street, Brooklyn

A project of the Department of Park & Recreation
Abel Bainson Butz

Special Recognition Awards



13 Citywide parks maintenance, operations, and art conservation staff,

for their dedication and efforts providing safe and welcoming open spaces, which have been particularly critical for the health and wellbeing of New Yorkers during the pandemic, including the Department of Parks & Recreation, Asphalt Green, Bronx River Alliance, Bryant Park Corporation / 34th Street Partnership, Central Park Conservancy, City Parks Foundation, Alliance for Flushing Meadows Corona Park, Forest Park Trust, Greenbelt Conservancy, Historic House Trust, Hudson Yards Hell's Kitchen Alliance, Lincoln Center for the Performing Arts, Lower East Side Ecology Center, Madison Square Park Conservancy, New York Restoration Project, Prospect Park Alliance, Randall's Island Park Alliance, Riverside Park Conservancy, The Battery Conservancy, and Times Square Alliance.



14 Citywide Coastal Resiliency initiatives,

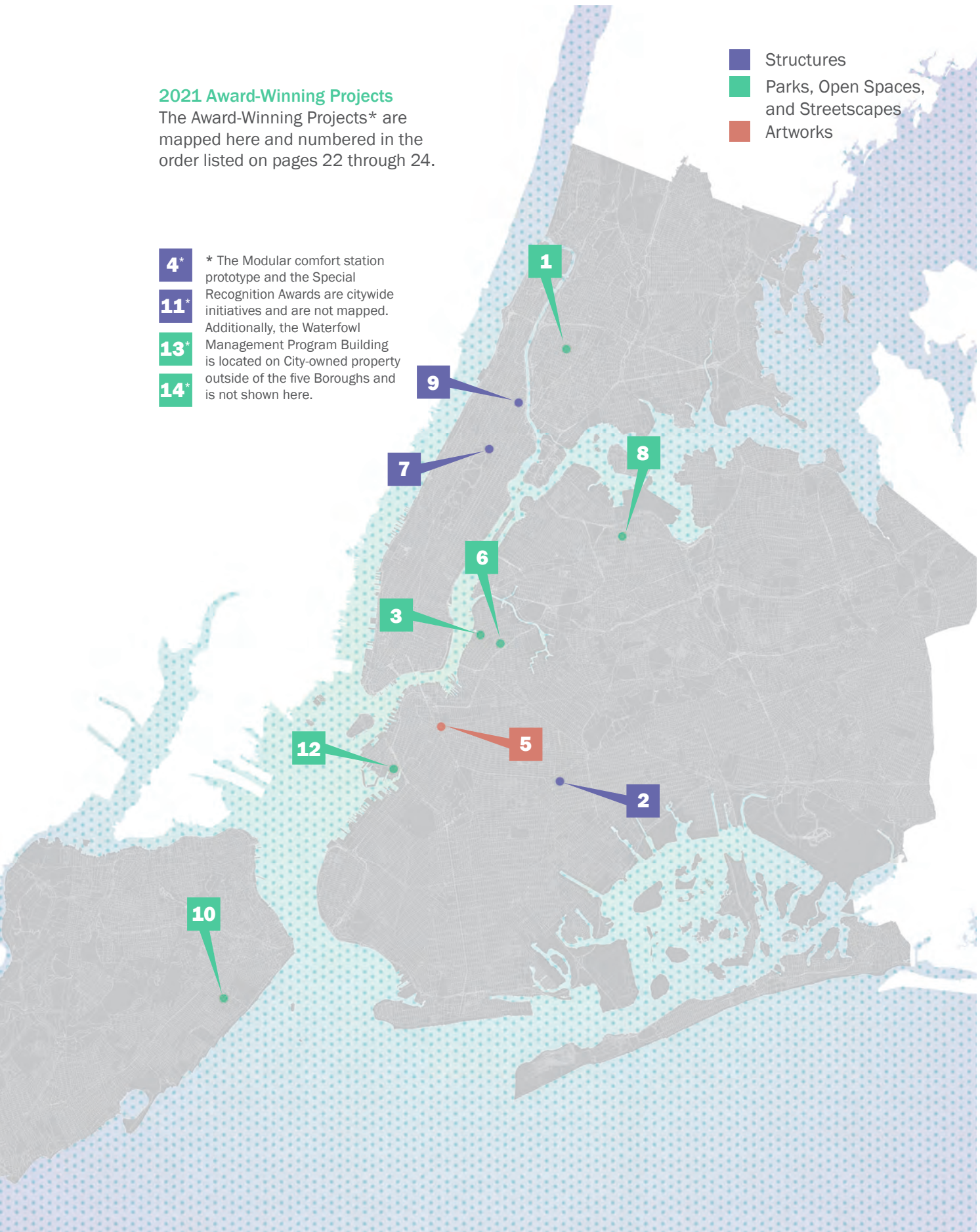
including the Raise Shoreline program, the US Army Corps Staten Island Coastal Storm Risk Management and Rockaways Atlantic Shorefront Projects, East Side Coastal Resiliency, Lower Manhattan Coastal Resiliency, and the Interim Flood Protection Measures by the Mayor's Office of Climate Resiliency, New York City Economic Development Corporation, Department of Design and Construction, Department of Environmental Protection, Department of Parks & Recreation, Department of Transportation, New York City Emergency Management, and the US Army Corps of Engineers.

2021 Award-Winning Projects

The Award-Winning Projects* are mapped here and numbered in the order listed on pages 22 through 24.

- Structures
- Parks, Open Spaces, and Streetscapes
- Artworks

- 4* * The Modular comfort station prototype and the Special Recognition Awards are citywide initiatives and are not mapped.
- 11* Additionally, the Waterfowl Management Program Building is located on City-owned property outside of the five Boroughs and is not shown here.
- 13*
- 14*





Special Projects and Interagency Initiatives

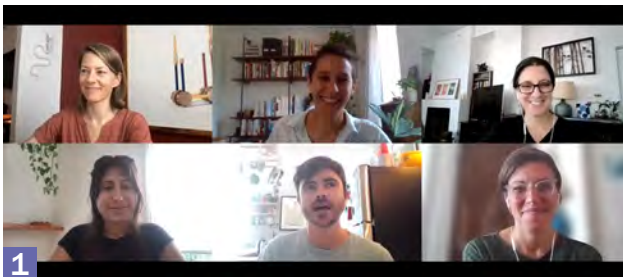
Streetscapes for Wellness

In 2021, PDC Urban Design & Policy Manager Jenna E. Miller completed the research phase for *Designing New York: Streetscapes for Wellness*. This initiative is a collaboration with The Fine Arts Federation of New York, the New York Chapter of the American Society of Landscape Architects, the Department of City Planning Urban Design Office, and a larger interagency steering committee of key City agency partners involved in the design and health of the city, including representatives from the Department of Transportation, Department of Parks & Recreation, and the Department of Health & Mental Hygiene, among others.

With the invaluable assistance of ASLA-NY Public Realm Research Associate Ariella Levitch, Jenna led a series of interviews and compiled research on nearly thirty case studies that include design strategies such as open streets, community engagement toolkits, retail and restaurant extensions, artist installations, and expanded micro-mobility lanes. The PDC hosted research workshops and engagement sessions with the steering committee and the Department of City Planning's Borough Urban Designers group.

The diverse selection of case studies from New York City and a handful of other communities illustrates how innovative initiatives—temporary, long-term, and at a variety of scales—may inform and inspire future visions for our streetscapes.

Streetscapes for Wellness recognizes streetscapes as essential to improving physical health, mental wellbeing, community adhesion, environmental sustainability, and climate resiliency. This initiative represents an ongoing conversation between public and private stakeholders about how we can seize this opportunity to design and build high-quality streetscapes that contribute to the health, equity, and wellness of our city's diverse communities. The publication will serve as guidance for the many designers, planners, policymakers, community groups, and individuals in cities far and wide who care about the future of their streets.



1. The *Streetscapes for Wellness* team meeting with agency colleagues from the Department of Transportation's Public Space team to discuss the NYC Open Streets program
2. Staff from the Department of Parks & Recreation sharing examples of public green spaces that successfully interface with and augment New York City's streetscapes





ASLA National Conference

In November 2021, PDC Commissioner Deborah Marton and PDC Urban Design & Policy Manager Jenna E. Miller presented at the 2021 American Society of Landscape Architects (ASLA) National Conference in Nashville, Tennessee, in collaboration with Jennifer Nitzky, ASLA-NY Trustee and Vice-President of The Fine Arts Federation of New York. Their presentation, “Streetscapes for Wellness: Whose Wellness Are We Talking About?” introduced the Streetscapes for Wellness research initiative and examined the overlapping complexities and inherent inequities of designing in the public realm during and after the COVID-19 pandemic. By showcasing case study research, they explored how multifaceted, collaborative, community-led design response initiatives responded to city needs. They also led a discussion that pondered how lessons learned from temporary elements could inform future, permanent implementations and create healthier, more equitable and inclusive streetscapes.

3. Pictured here: *Streetscapes for Wellness* presenters Jennifer Nitzky, Jenna E. Miller, and Deborah Marton; photo courtesy of ASLA
4. A graphic announcing the *Streetscapes for Wellness* conference session on social media
5. Jennifer Nitzky, Deborah Marton, and Jenna E. Miller moderating a discussion on the future of streetscapes; photo courtesy of Justin Garrett Moore
6. PDC Commissioner Marton presenting case studies that introduce questions of equity within public realm design; photo courtesy of Justin Garrett Moore

PARK(ing) Day 2021: Día de Calle Verde



In September 2021, PDC Urban Design & Policy Manager Jenna E. Miller joined members of the New York Chapter of the American Society of Landscape Architects (ASLA-NY) to organize Día de Calle Verde, an Open Streets activation organized with the Washington Heights Expeditionary Learning School (WHEELS) and Futures Ignite (formerly Friends of Wheels) at West 182nd Street in Manhattan.

The ASLA-NY and PDC team proposed the Día de Calle Verde theme for PARK(ing) Day 2021 as a celebration of the WHEELS student-led “Clean Air Green Corridor” environmental justice initiative, which reimagines 182nd Street as

a pedestrianized green pathway that safely connects the five schools along the corridor to open space and community resources. PARK(ing) Day is an annual international event where residents, artists and activists collaborate to temporarily transform curbside parking spots into public spaces. Activations often take the form of creating temporary parklets for community use and providing opportunities for art and civic engagement. The mission of these happenings is to call attention to the importance of urban open space and generate a dialogue about the benefits of public green space to elevate the health and quality of urban life for the surrounding neighborhood.

Streetscape activations and programming at the Green Corridor included a pop-up park, games, obstacle courses, planting workshops, PDC staff-led *Streetscapes for Wellness*-themed bilingual community engagement activities, and an urban design demonstration led by the NYC Department of City Planning Urban Design Office. This programming transformed the entire block between the school buildings of WHEELS and I.S. 143, setting the stage as a model for a future Open Street and demonstrating the need for a healthier, safer, and more engaging streetscape for learning.

organizations, including the American Planning Association New York Metro chapter (APA-NYM), the City College of New York Student ASLA Chapter, Street Lab, and with contributions from several other organizations, including Forms + Surfaces, the Urban Garden Center, Hardscrabble Farms, QCP, SPIN, Better Block and National PARK(ing) Day, the activation of the street created a lively pop-up linear park that the organizing team hopes will inspire the next generation of environmental stewards, landscape architects, and planners.

Local community members met the Día de Calle Verde event with great excitement. With the participation of a number of other local

1 - 10. Community engagement activities for people of all ages temporarily transformed 182nd Street into a colorful streetscape for people; photos 6 - 10 courtesy of Génesis Abreu, Jennifer Nitzky, and Jason Bajor



Prefabrication in the Public Realm

To celebrate the launch of *Designing New York: Prefabrication in the Public Realm*, which was published in late 2020, Columbia University Graduate School of Architecture, Planning, and Preservation and the PDC continued an ongoing collaboration by convening designers and publication contributors in a virtual panel discussion.

Designers presented their projects with the aim to further unpack the future of prefabrication in densely populated and expanding urban metropolises like New York City and focused on how to meet growing needs for public infrastructure while also addressing pressures to expedite timelines and reduce costs.

The discussion included opening comments and was moderated by PDC Commissioner Laurie Hawkinson and PDC Deputy Director of Architecture, Urban Design & Special Initiatives Rebecca Macklis. Presenters included Ada Tolla from LOT-EK, Ben Busche of Brut Deluxe, Carlo Ratti of Carlo Ratti Associati, and Ronnie Markussen from Human Habitat.

1. Ada Tolla presenting work from LOT-EK
2. An excerpt from the virtual panel discussion
3. Event graphic; image courtesy of Columbia University Graduate School of Architecture, Planning & Preservation

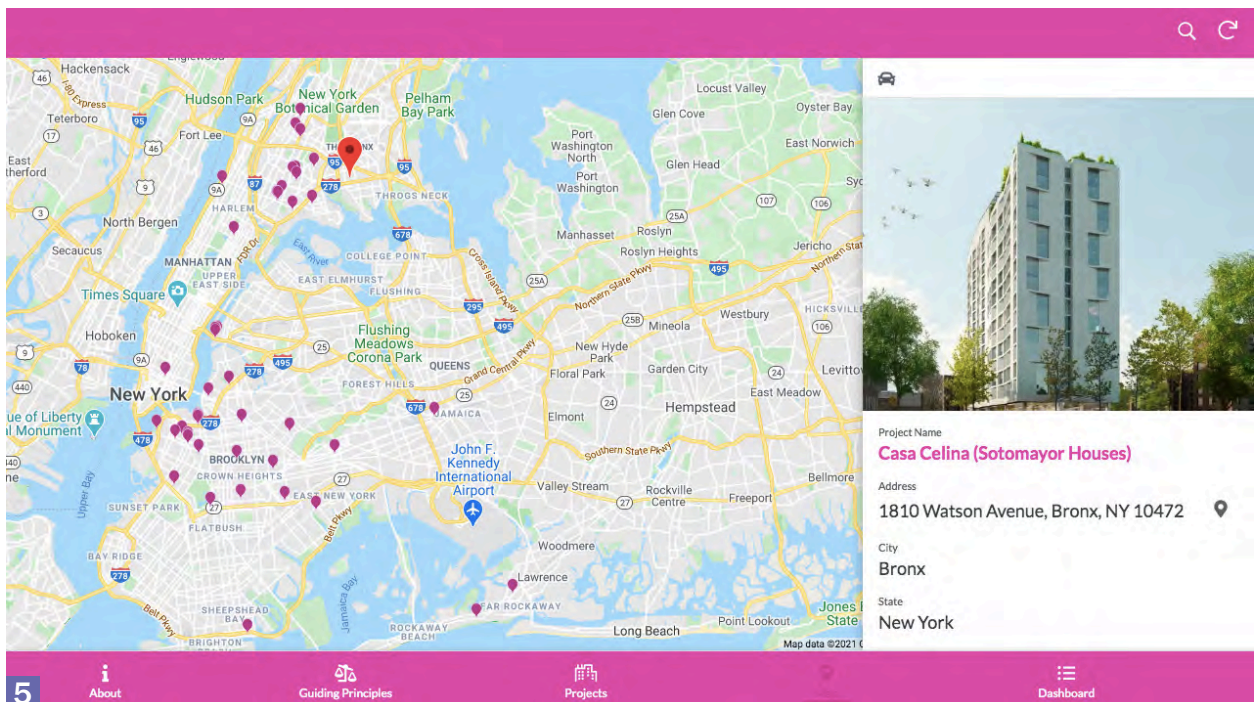


Quality Affordable Housing

As part of the ongoing *Designing New York: Quality Affordable Housing* initiative, PDC Deputy Director for Architecture, Urban Design & Special Initiatives Rebecca Macklis continued to advance research on the web-based interactive Quality Affordable Housing database and serve on NYCHA's Connected Communities Advisory Panel, as well as participate in their PACT (Permanent Affordability Commitment Together) community engagement sessions. As an extension of the Design Commission's partnership with the AIA NY Housing Committee and to further the information exchange of best-practices to-date in affordable housing design and development, Rebecca worked with Housing Committee co-chairs to develop programming for 2022, which will be focused on recent evolutions in the affordable housing field and considerations for post-pandemic design and recovery.



4. Casa Celina Housing in the Bronx is featured in the web-based database.
5. The database features examples of affordable housing, many of which are located in New York City.



Other Collaborations and Initiatives

In 2021, PDC staff worked collaboratively with other City agencies, including the Department of Design and Construction and the Department of City Planning to establish and streamline design review processes for projects being executed via the design-build delivery method. Acknowledging that design-build is an emerging and growing model of project delivery across New York City's capital projects, staff established an interagency design-build information exchange, which will be further developed in 2022.

PDC staff and commissioners conducted site visits at The Battery at the lower tip of Manhattan, Sherman Creek Park in upper Manhattan, and Bush Terminal Piers Park in Brooklyn to gain an in depth understanding of complex sites.

As an active member of the City's interagency Security Infrastructure Working Group, PDC staff continued to review and advocate on behalf of the better incorporation of security infrastructure into the public realm.

Following PDC staff engagement in urban design-related workshops led by the NYC Department of Mental Health and Hygiene and the Center for Active Design, PDC staff were invited to provide content review for the forthcoming second edition of the *Active Design Guidelines*.

PDC staff contributed early feedback to the Department of City Planning on their Urban Design Principles, which were refreshed and reevaluated in the context of the exceptional circumstances brought on by the pandemic and longstanding social inequities. PDC staff also engaged with DCP's piloted feedback activities and helped to publicize the community engagement website following its 2021 launch.



1. PDC staff and commissioners conducted a site visit to the proposed site of Steiner Sequel Studios in Sunset Park, Brooklyn with the Economic Development Corporation.
2. PDC Commissioners Karen Kiehl and Deborah Marton are pictured with PDC Senior Director of Capital Projects Grace Han during a site visit to The Battery to review a proposal for resiliency efforts.

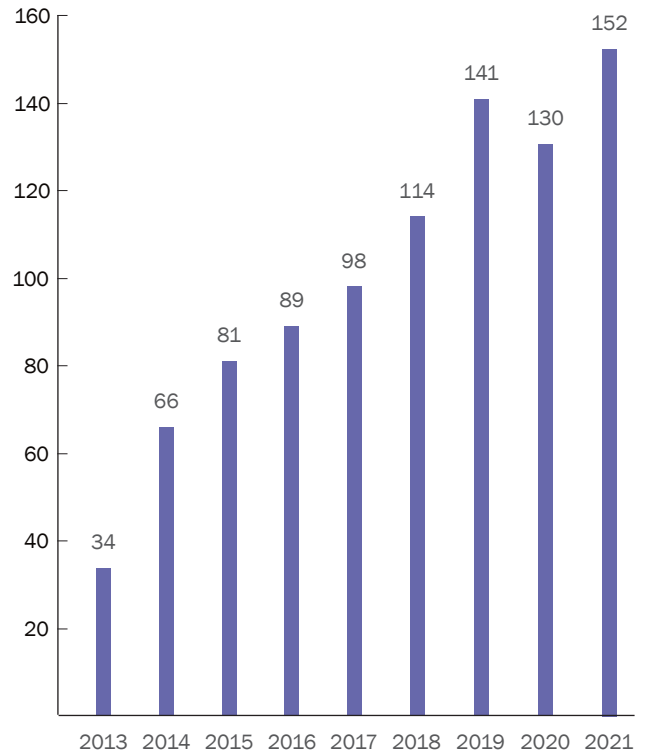


The Archive

The Public Design Commission maintains an archive of projects reviewed by the Commission since 1902, documenting more than 7,500 sites throughout New York City and providing a unique view into the history of the City's public works. Containing original documents, drawings, and architectural plans, the Archive informs the Commission's review of current projects and provides a valuable resource to other City agencies as well as to researchers from around the world. In addition, the Archive holds special collections that were acquired by Commission members and staff. These photographs, postcards, letters, books, and artifacts provide additional insight into the history of the public spaces and buildings of New York City.

*In 2021, the archive facilitated **152 research requests**, which was a **16.9% increase from 2020**.*

PDC Archivist & Senior Records Manager Julianna Monjeau finalized her review of the PDC's Outdoor Public Art Database, which was added to the City's Open Data Portal and shared with the Monument Lab's National Monument Audit project.



Research Requests by Year

Open Data

NYC Open Data is an online portal where the public can gain access to data generated by various New York City agencies and City organizations. As part of the initiative to improve the accessibility, transparency, and accountability of City government, NYC Open Data offers access to a repository of government-produced, searchable data sets available for download. The PDC submitted a list of projects that were reviewed by the Commission on a monthly basis, a list of projects that were submitted to and reviewed by the Commission on an annual basis, and a list of outdoor public artworks.

Urban Archive

Continuing our work to share the PDC's collections more broadly, Julianna published two Urban Archive story maps on the Urban Archive platform in 2021. As of March 2021, our stories, images, and profile have gathered over 50,065 total views.

3. Photograph of Department of Health Child Health Station, East Waltham Street and 105th Avenue, Queens, designed by Architect Jas. Gamble Rogers; approved April 13, 1937

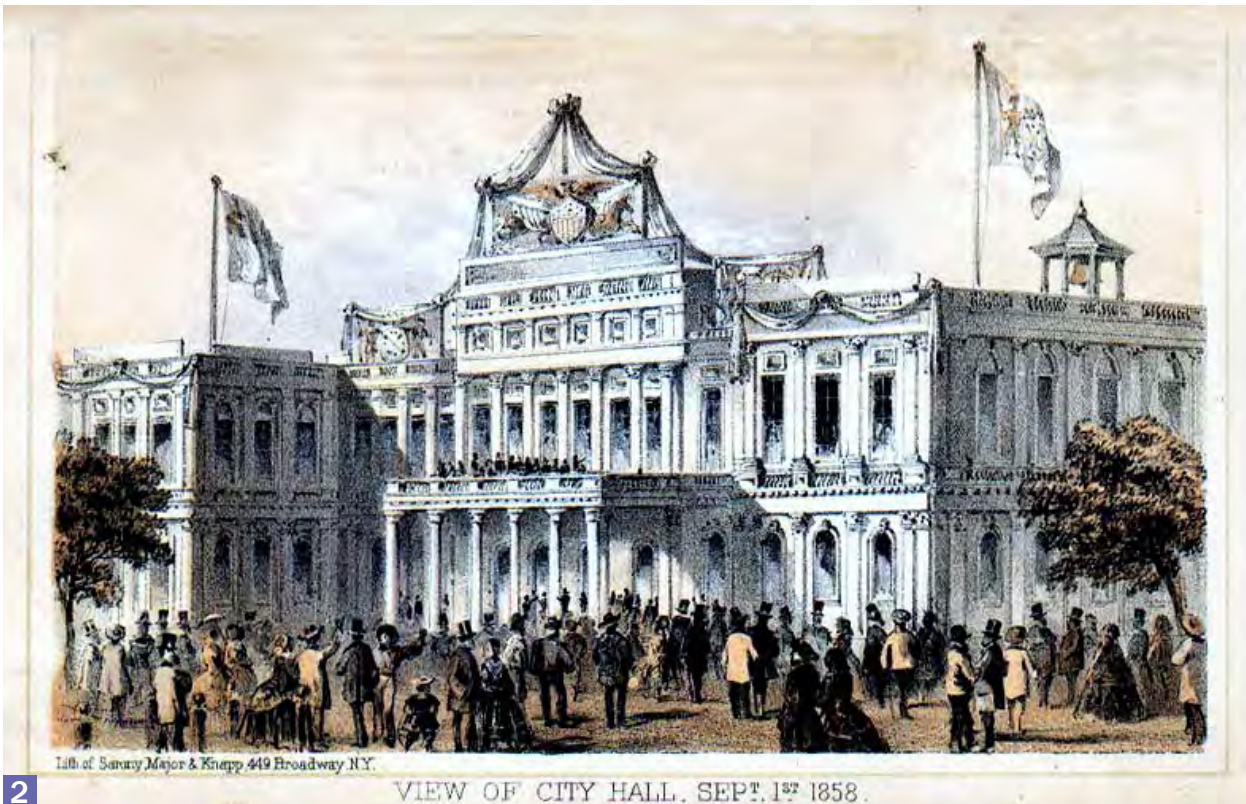


City Hall Tour Program



While tours have been suspended during the pandemic, City Hall Tour Manager and historian Mary Beth Betts has continued research on the historic events and people associated with City Hall, City Hall Park, and the surrounding environs. To update and expand future tours, research has included the slave uprisings of 1712 and 1741 and the 1850 rally at City Hall by New York African Americans after the freeing of James Hamlet, who was one of the first African Americans sold into slavery under the recently enacted Fugitive Slave Law. Research has also explored the City Hall architects, Joseph Francois Mangin and John McComb, Jr. in depth, and expanded into more recent history, including city officials appointed by mayors, and elected officials.

1. *Plan of the City of New York and of the Island;*
The Commissioners Plan published by A. T. Goodrich, 1828
2. *View of City Hall, September 1st, 1858;*
lithograph by Napoleon Sarony



Loan of the Oliver Hazard Perry Portrait

PDC Manager of Art, Conservation & Design Carolina Llano managed the loan of the City Hall portrait of Oliver Hazard Perry (1816) by John Wesley Jarvis for the exhibition, *In American Waters: The Sea in American Painting* exhibition organized by the Peabody Essex Museum and Crystal Bridges Museum of American Art. The artwork was on view at the Peabody Essex Museum from May 29, 2021, to October 3, 2021, and at the Crystal Bridges Museum of American Art from November 6, 2021, to January 31, 2022.

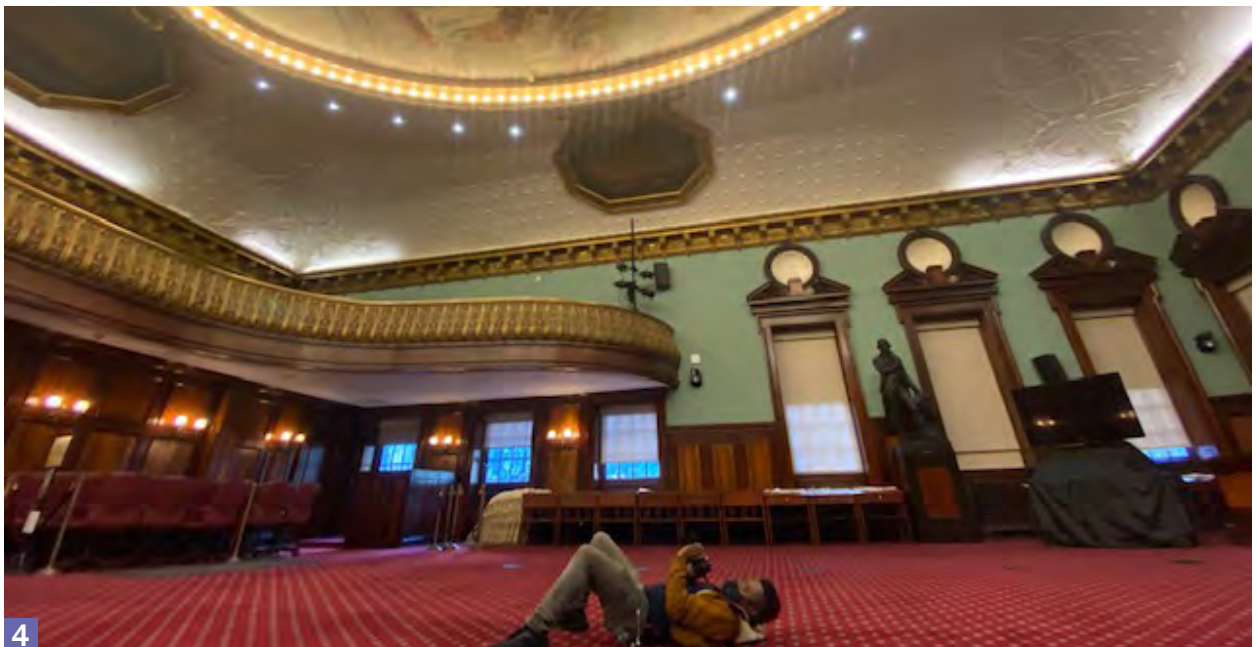
Epicenter: The Black Experience through the Eyes of City Hall

Carolina Llano also worked in collaboration with Black Gotham Experience to expand the Epicenter tour program with a three-part video series. Scheduled for completion in summer 2022, the program will highlight the African Diaspora's impact on lower Manhattan and City Hall from the 1600s through the early 1800s.

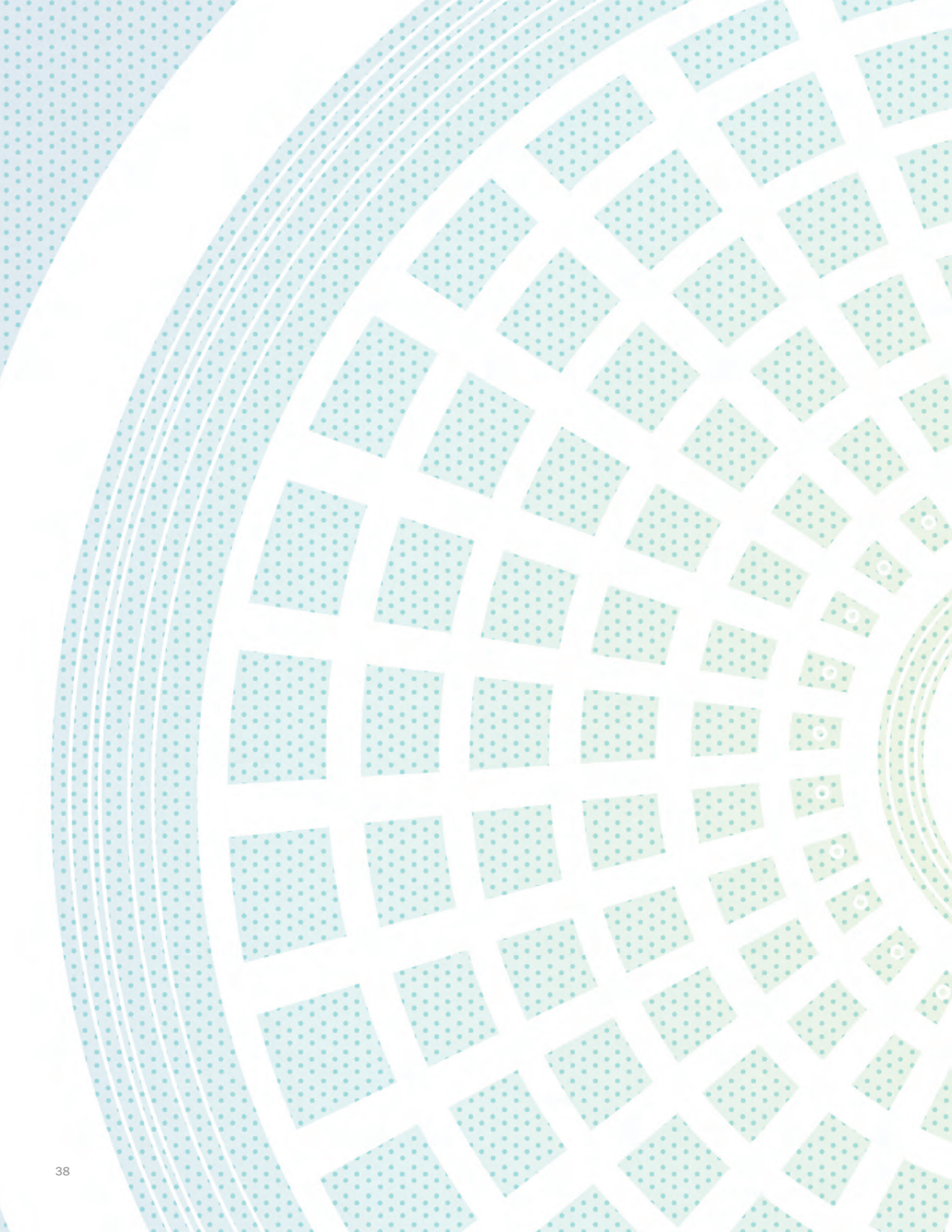


3. *Oliver Hazard Perry*, portrait by John Wesley Jarvis, 1816

4. Black Gotham Experience filming footage in the City Council Chamber



4





Commissioners and Staff

Commissioner Biographies 2021

Signe Nielsen

Signe Nielsen is the Landscape Architect member and President of the Public Design Commission. As founding principal of her firm for 25 years, she has designed and supervised the construction of more than \$240 million worth of projects, including waterfront parks, large campuses, urban design and transportation improvements, and corporate facilities in the United States and abroad. Her design work has received more than two dozen national design awards, has been published extensively in professional journals and books on landscape architecture and has been exhibited in New York, Washington, DC, and Chicago. A Fellow of the American Society of Landscape Architects, Signe holds degrees in Urban Planning from Smith College, in Landscape Architecture from City College of New York, and in Construction Management from Pratt Institute.

Philip E. Aarons

Philip E. Aarons is a lay member and Vice President of the Public Design Commission and a partner at Millennium Partners, a developer of large-scale, mixed-use properties in major cities throughout the country. Prior to co-founding Millennium Partners in 1990, he was President of the real estate subsidiary of the General Atlantic Corporation, a pioneer in the construction of low-income housing. From early 1978 until 1983, Phil worked in the Koch Administration, first as an Assistant to the Mayor, and then, in mid-1979, as President of the Public Development Corporation overseeing projects including the South Street Seaport and Carnegie Hall restoration. An avid art collector, Phil is active on the boards of a number of cultural and civic organizations, including Friends of the High Line, where he is Founding Board Chair, Creative Time, MoMA PS1, Printed Matter, The Museum of Modern Art's Library Council, and Ballet Tech. Phil graduated from Columbia College where he majored in Art History and the Columbia University School of Law where he was an Editor of the Law Review.

Kenseth Armstead

Kenseth Armstead is the painter member of the Public Design Commission and an artist whose works have been exhibited at the Whitney Museum of American Art, the Brooklyn Museum and Guggenheim Museum, among numerous others. Over the last three years, he has served as a member of the New York State Council on the Arts, Visual Arts Panel which awards grants to support the visual arts statewide. This year he will be a Lecturer at Columbia University's Graduate School of Architecture, Preservation and Planning. He will also be a guest lecturer at Oberlin College and Harvard University Graduate School of Design. Armstead studied at the Corcoran College of Art & Design, the Skowhegan School of Painting and Sculpture, the Whitney Museum of American Art's Independent Study Program, and the NYU Tandon School of Engineering.

Laurie Hawkinson

Laurie Hawkinson is the Architect member of the Public Design Commission. She is a partner at Smith-Miller + Hawkinson Architects (SMH+); Professor of Architecture at Columbia University's Graduate School of Architecture, Planning and Preservation; and serves on Columbia University's Professional Schools' Diversity Council. Previously, she taught at Georgia Institute of Technology's School of Architecture, Southern California Institute of Architecture, Yale University's School of Architecture, the Institute for Advanced Architectural Studies in Venice, Harvard University's Graduate School of Design, Parsons School of Design's School of Environmental Design, and the University of Miami's School of Architecture. She has served on the Space Planning Committee of Columbia's Manhattanville Campus and on the Dean Search Committee of Columbia University's Graduate School of Architecture, Planning and Preservation. She holds a Bachelor of Architecture from The Cooper Union, a Bachelor of Fine Arts from UC-Berkeley, a Master of Art in Department of Art Practice from UC-Berkeley, and was a participant in the Whitney Museum of American Art's Independent Study Program.

Karen Kiehl

Karen Kiehl serves on the Public Design Commission as the representative of the Brooklyn Museum. From 2008 to 2011, Karen Kiehl was a Senior Vice President within the Investment Banking Division at Barclays Capital, where she was responsible for the creation of customized taxonomies for online storage and retrieval of institutional knowledge as well as automatic downloads of financial data into presentation format. From 1995 to 2008, Ms. Kiehl worked at Goldman Sachs, where she served as the CIO of the Merger Department and eventually became head of the Investment Banking Division's Knowledge Management group. Prior to Goldman Sachs, Ms. Kiehl was a consultant and Director of Training at FactSet Data Systems. Ms. Kiehl holds a B.A. from Colgate University and an M.S. from Columbia University. She is a mother of two boys and served as the Co-Chair of the Poly Prep Spring Gala from 2014 to 2018 at their school.

Deborah Marton

Deborah Marton is Executive Director of Van Alen Institute, an independent non-profit working to create equitable cities through inclusive design, with a specific focus on transformative community-driven projects that can benefit from Van Alen's global interdisciplinary network. Prior to joining Van Alen Institute, Deborah held the positions of Executive Director for the New York Restoration Project (NYRP), where she led the private component of New York City's MillionTreesNYC initiative, as well as Executive Director of the Design Trust for Public Space where she worked with municipal leaders and neighborhood change agents to empower communities of need by unlocking the potential of open space.

Manuel Miranda

Manuel Miranda is a lay member of the Public Design Commission and a graphic designer. His studio, MMP, works across an expansive media spectrum to make places and ideas visible, legible, and navigable to people. In addition to professional practice, Manuel is an adjunct faculty member in the graduate graphic design program at the Yale School of Art and Vice President of the AIGA New York board of directors. In 2015, he led a team that created the winning proposal for Van Alen

Institute's "National Parks Now", a competition to imagine new audience engagement strategies at urban parks for the National Park Service. Previously, Manuel was a design director at 2x4, Inc., and a senior designer at Brand Integration Group at Ogilvy. He earned a BFA from The Evergreen State College in Olympia, WA, and an MFA in Graphic Design from the Yale University School of Art.

Richard W. Moore

Richard W. Moore served on the Public Design Commission as the representative of the Brooklyn Museum, where he was a Trustee and a member of the Executive Committee of the Board and chaired its Building and Grounds Committee until April 2021. A retired trusts and estates lawyer, Dick was of counsel in the Individual Clients department of the law firm of Day Pitney LLP. He currently serves as a member of the board of the Brooklyn Community Foundation and has also served on the boards of the HOPE Program, the Brooklyn Historical Society, and the Packer Collegiate Institute. Dick graduated from Harvard College and the University of Pennsylvania Law School.

Susan Morgenthau

Susan Morgenthau serves on the Public Design Commission as the representative of the New York Public Library, where she has been a Trustee since 2010. She has been a co-Chair of the Library Council since 2004, and is a member of the NYPL's Program and Policy Committee, Audit Committee, Development Committee, Finance Committee, and the Privacy and Policy Working Group. Susan's volunteer activity outside of the Library includes serving on the board of the Lehman College Foundation, The Riverdale Nature Preservancy, as well as a founding board member and past president of the Friends of Van Cortlandt Park. She currently serves on the Friends of Horticulture Committee at Wave Hill, a public garden in the Bronx, and is President of the Riverdale Sanitation Corporation, a private sanitary sewer serving over 300 properties in the North West Bronx. Susan is a former Head Teacher at the Brearley School, and served in the admissions office both at Brearley and at the Fieldston Lower School. She is an alumnus of Vassar College, where she received a BA in Philosophy, and completed her graduate work at the Bank Street College of Education.

Ethel Sheffer

Ethel Sheffer serves on the Public Design Commission as the Mayor's Representative. She is an urban planner, civic and community leader, and educator. Ethel heads Insight Associates, a small consulting group providing research services and advice in community planning and development, land use, and collaborations among government, nonprofits, and the private sector. In the 1990s, she headed the Columbus Circle Tri-Board Task Force of Community Boards 4, 5, and 7 and the Riverside South Task Force. Ethel also served as President of the New York Metro Chapter of the American Planning Association from 2002 to 2008. She is a Board Member of the Citizens Housing and Planning Council and a member of the Municipal Art Society's Planning Committee, and she teaches in Columbia University's Graduate Planning Program.

Mary A. Valverde

Mary A. Valverde is the sculptor member of the Public Design Commission. She is an interdisciplinary artist who uses ephemeral materials to reflect upon sacred spaces and rituals and politics of production, exploitation, social roles, culture, and tradition. Mary teaches at Hunter College and was the 2011 MFA Lecturer at the ICA Philadelphia. She is the recipient of the University of Pennsylvania's Graduate School of Design's Full Dean's Diversity Fellowship and in 2010 received the Artist Fellowship, Inc., Individual Artist Award and the Mayer Foundation Grant. Mary's work has been exhibited at El Museo del Barrio, Queens Museum, Jersey City Museum, Momenta Gallery, Abrons Art Center, and Cuchifritos Gallery, among others. She received her MFA from the University of Pennsylvania and her BFA from the School of Visual Arts.

Dr. Merryl H. Tisch

Dr. Merryl H. Tisch serves on the Public Design Commission as the representative of the Metropolitan Museum of Art where she is a trustee. She is one of the nation's leading voices on education, having served at the helm of New York State's governing body for education from 2009 to 2016. As Chancellor of the New York State Board of Regents, Dr. Tisch was responsible for setting the State's education policy and overseeing both public and private education throughout New York. She currently holds a number of philanthropic and civic positions, including serving as co-chairperson of the Metropolitan Council on Jewish Poverty, a leading social services agency. Dr. Tisch also sits on the executive committees of The Washington Institute for Near East Policy and the Citizens Budget Commission. Additionally, she serves on the board of The International Rescue Committee, The Trust for Cultural Resources of the City of New York, and the Graduate School of Education's Board of Overseers at the University of Pennsylvania. Dr. Tisch earned a B.A. from Barnard College, an M.A. in Education from New York University, and received an Ed.D from Teacher's College, Columbia University.

Staff Biographies

Keri Butler

Keri Butler is Executive Director of the Public Design Commission. She has 15 years of experience at the PDC in numerous roles, most recently as the Deputy Executive Director. As an advocate for excellence and equity in public art and design, she has developed and implemented policies and initiatives to guide the Commission's review of city projects and enhance the agency's mission. In addition to overseeing the PDC's design review process, Keri has represented the Commission on panels and public events that highlight the City's art collection and women designers. She has managed collaborative projects and events such as the Annual Awards for Excellence in Design, Women-Designed NYC, and Sustainable NYC. Additionally, Keri has worked with numerous agencies and private partners to preserve the City's art collection and expand the City Hall tour program to highlight Black history. She managed Superstorm Sandy recovery efforts and led the Commission through the abrupt transition to remote work during the COVID-19 pandemic, developing online events that have increased public engagement and participation in the design review process. Keri holds a Bachelor of Arts in Art from the University of North Texas and a Master of Arts in Arts Administration from the Art Institute of Chicago.

Mary Beth Betts

Mary Beth Betts is the Tour Manager at the Public Design Commission. She plans tours of New York City Hall, manages a team of four docents, and researches the diverse history of City Hall and its collections. She is an architectural historian and has worked at the New York City Landmarks Preservation Commission, The New-York Historical Society and taught architectural history at The Irwin S. Chanin School of Architecture, The Cooper Union. She organized exhibitions on McKim, Mead & White, and New York City Hall and has published essays on Cass Gilbert, New York City Hall and the New York City waterfront. Mary Beth holds a Ph.D. in Art History from the Graduate Center, CUNY and a B.A. in Art History from the University of Virginia and is active in the Society of Architectural Historians and the Vernacular Architecture Forum.

Grace Han

Grace is an urban planner with over a decade of experience managing capital and planning projects, focusing on programming, place making, and civic vitality. Her projects have included cultural institutions, university campuses, and waterfront open space and development. As the Senior Director of Capital Projects, she oversees the design review process, working closely with agency liaisons. Grace received her Masters' in Urban Planning from Columbia University, where she has also taught, and has an undergraduate degree from Washington University in St. Louis.

Carolina Llano

Carolina is the Manager of Art, Conservation & Design at the Public Design Commission. She reviews capital projects and proposals submitted by City agencies and manages the review of public artwork and conservation projects. Working alongside the Executive Director, she also oversees initiatives related to the maintenance and preservation of the City Hall portrait collection, as well as special projects and artwork loans. Carolina is committed to supporting the artists' visions to contribute public artworks that add intangible value to the City's art collection, and which reflect the unique identity of New York City and its values of tolerance, resilience, and humanity. She has prior management experience on institutional, residential, and museum projects at award-winning architecture firms in New York City and abroad, and she continues to pursue her interest in the intersection of art, architecture, landscape, and urban design. She holds a Master's Degree in Architecture from Columbia University's Graduate School of Architecture, Planning & Preservation, and a Bachelor of Design in Architecture from the University of Florida.

Rebecca Macklis

Rebecca is the Deputy Director of Architecture, Urban Design & Special Initiatives at the Public Design Commission. She is an interdisciplinary urban designer, and at the Public Design Commission, her work is concentrated on design policy and the design review of architecture and urban design projects, with a focus on complex mixed-use developments, affordable housing, and urban systems. She leads the *Designing New York: Quality Affordable Housing* and *Prefabrication in the Public Realm* initiatives as well as Women-Designed NYC, and also manages the Commission's special projects such as the Annual Awards for Excellence in Design. Rebecca works to champion the holistic, equitable, and resilient design of the public realm and strives to promote collaborative cross-sector and multi-stakeholder processes. Her past experience spans architecture, anthropology, and community development, where she has worked at the intersection of planning, policy, and design of the built environment. Rebecca is a member of the Urban Design Forum (a 2019 Forefront Fellow) and holds a MArch in Urban Design from the Bartlett School of Architecture, University College London, and a BA in Architecture and Anthropology, with a minor in American Culture Studies, from Washington University in St. Louis. She has been a guest instructor, critic, and presented work at various institutions nationally.

Julianna Monjeau

Julianna is the Archivist and Senior Records Manager of the Public Design Commission. She holds a Master's Degree in Archives & Public History from New York University. At the Public Design Commission, she manages the accession and preservation of all public records reviewed by the Commission and provides research services. She also manages the digitization of Design Commission records and posts selections of digitized records on our social media accounts. She is a member of the Society of American Archivists, Mid-Atlantic Regional Archives Conference, and the Archivist's Roundtable of the Metropolitan New York.

Jenna E. Miller

Jenna is the Urban Design and Policy Manager at the Public Design Commission. A LEED Accredited Professional in Building Design and Construction and co-founder of design firm, RUEd' ARCH, Jenna has designed and managed a breadth of public and private design/build and architectural projects and exhibitions in New York, Massachusetts, and abroad. She is an Urban Design Forum Fellow and a member of the Female Design Council and the Society of American Registered Architects. She holds a Master's Degree in Architecture from Columbia University's Graduate School of Architecture, Planning and Preservation and a B.A. in Architecture and Environmental Studies from Wellesley College and served on the Wellesley Board of Trustees and Columbia University Senate, impacting institutional planning and policy. At PDC, Jenna oversees interagency urban design and policy initiatives and working groups, particularly those with a focus on the public realm, new technology, security, and environmental justice. Jenna represented the agency nationally at the ASLA Conference, and she leads the agency's geospatial analysis and data visualization, the PDC Annual Report, the *Designing New York: Streetscapes for Wellness* initiative, and special projects related to OneNYC 2050 and the Sustainable Development Goals. She strives to promote and develop strategies for improved equity and excellence of design in the City.



NYC DESIGN

NYC Public Design Commission
City Hall, Third Floor, New York, NY 10007
nyc.gov/designcommission